

## Anti-H\_SIGLEC8 hIgG1 Antibody(1H10)

### Product information

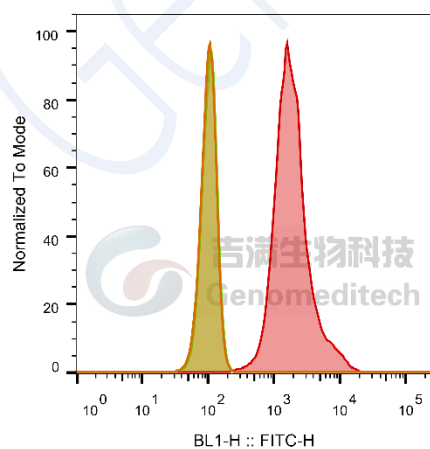
GM-28730AB-10	10 µg
GM-28730AB-100	100 µg
GM-28730AB-1000	1 mg

### Antibody Information

Species Reactivity	Human
Clone	1H10
Source/Isotype	Monoclonal human IgG1, κ
Application	Flow cytometry;
Other Names	SAF2, SIGLEC-8, SIGLEC8L
Gene ID	NM_014442.3(human)
Storage	Store at 2-8°C short term (1-2 weeks).Store at ≤ -20°C long term. Avoid repeated freeze-thaw.
Formulation	Phosphate-buffered solution, pH 7.2.
Endotoxin	< 1 EU/mg, determined by LAL gel clotting assay

### Data Examples

Flow cytometry H\_SIGLEC8 CHO-K1 Cell Line (Catalog # GM-C13008) was stained with Anti-H\_SIGLEC8 hIgG1 Antibody(1H10) or isotype control antibody.



SampleID	Geometric Mean : BL1-H
CHO-K1 anti-H_SIGLEC8+FITC-2nd Ab	101
CHO-K1 H_SIGLEC8 H_IgG+FITC-2nd Ab	105
CHO-K1 H_SIGLEC8 anti-H_SIGLEC8+FITC-2nd Ab	1841

Fig. FACS

Version:0.3.2.240521